



Mpad



Mpad Series

Breaking through Commercial LED Display

Stage Applctaion

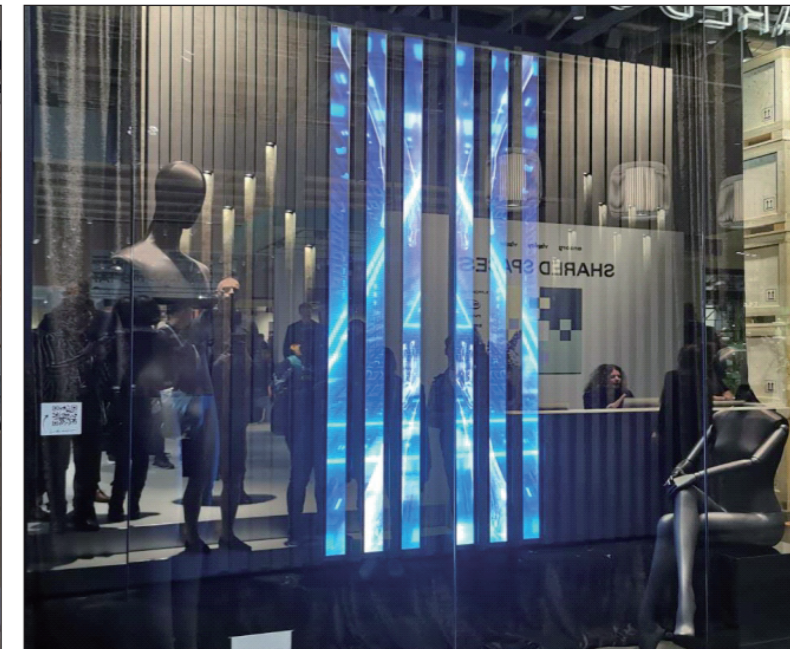


Stage Creative

Retail Application



Chain stores

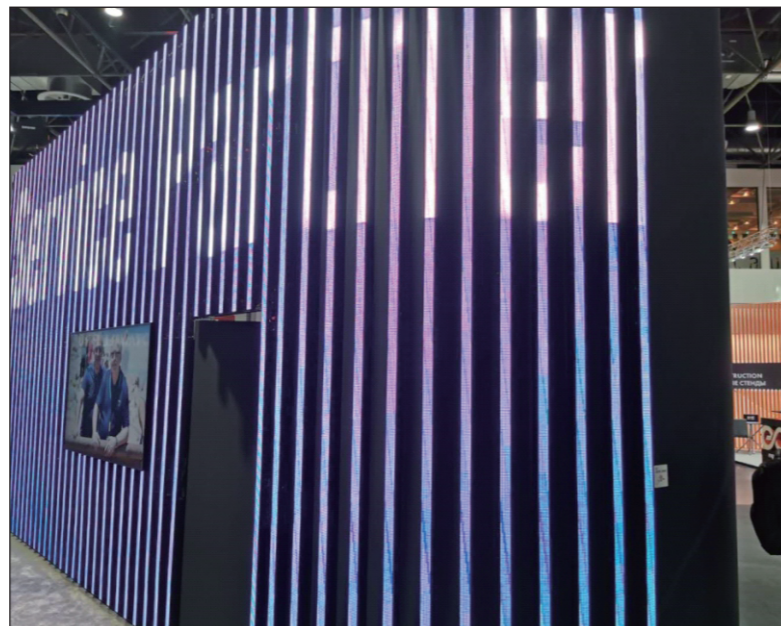


Chain stores

Retail Application

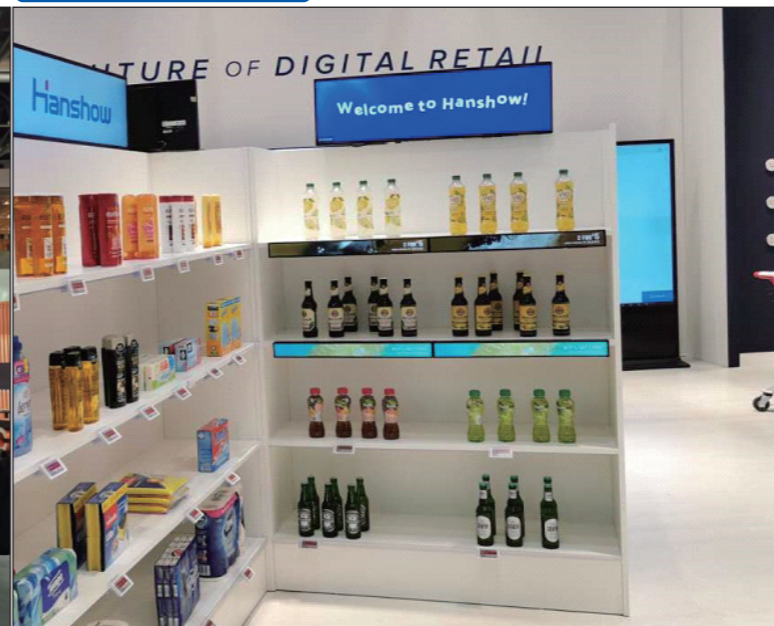


Chain stores



Chain stores

Corporate Application

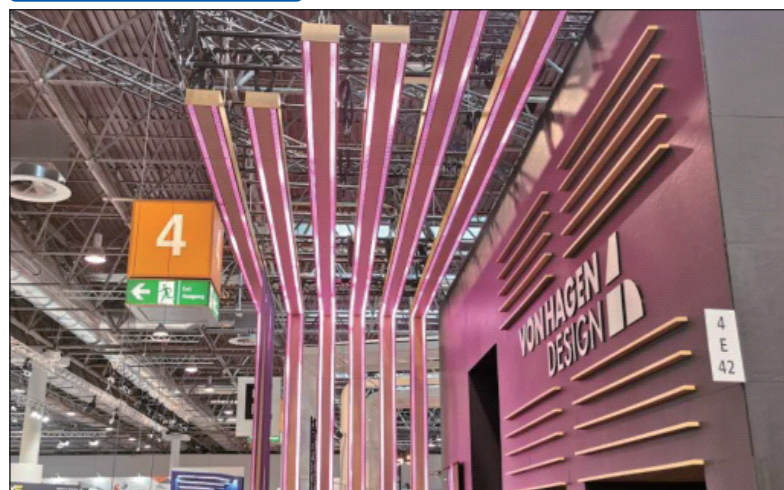


Shelf



Downstairs Application

Exhibition Application



Exhibition creative



Exhibition creative

Hotel Application



lobby



lobby

Mpad



High precision

The cabinet corner with CNC design to make sure the high precision assembling

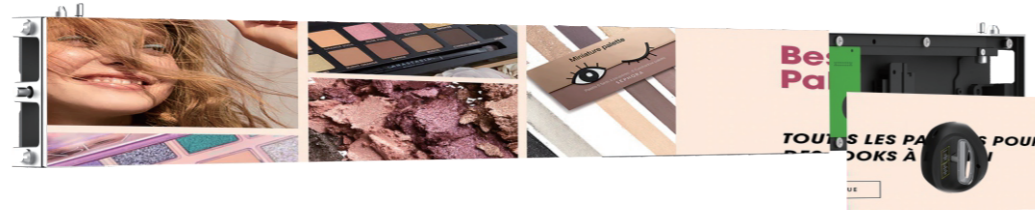


Various installation



Full front maintenance

- All components can be front access, just 5 seconds to replace one module
- Built in power supply, no need external power box
- Stable signal
No cable inside, more stable signal



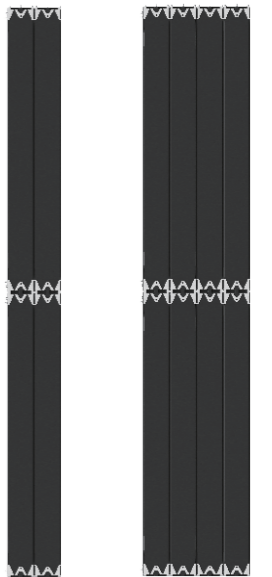
Gob design

- Module with GOB design, it can be waterproof.
- Higher protection for lamp, stronger.
- Touchable



Flexible size

The magicpad with two different cabinet size, 750*93.75mm & 1000*93.75mm to improve the space utilization and meet the project size maximum.



Parameters

Item	Specification	
Pixel Pitch(mm)	1.95	
LED types	SMD1515 GOB	
Drive mode	Constant current	
Module Resolution(dots)	128*48	
Module Pixles(dots)	6144	
Module Size(mm)	250*93.75mm	
Cabinet Size(mm)(WXH)	750*93.75mm	1000*93.75mm
Cabinet Weight(kg/pc)	1.7kg	2.4kg
Cabinet Resolution(dots)	384*48	512*48
Module Quantity(pcs) (WXH)	3*1	4*1
Max/ave. cabinet power	40w/10w	40w/10w
Pixel Density(dots/m ²)	262144dots/m ²	
Material	Aluminum	
Cabinet thickness	38mm	
Refresh rate	1920HZ	
Brightness	850nits	