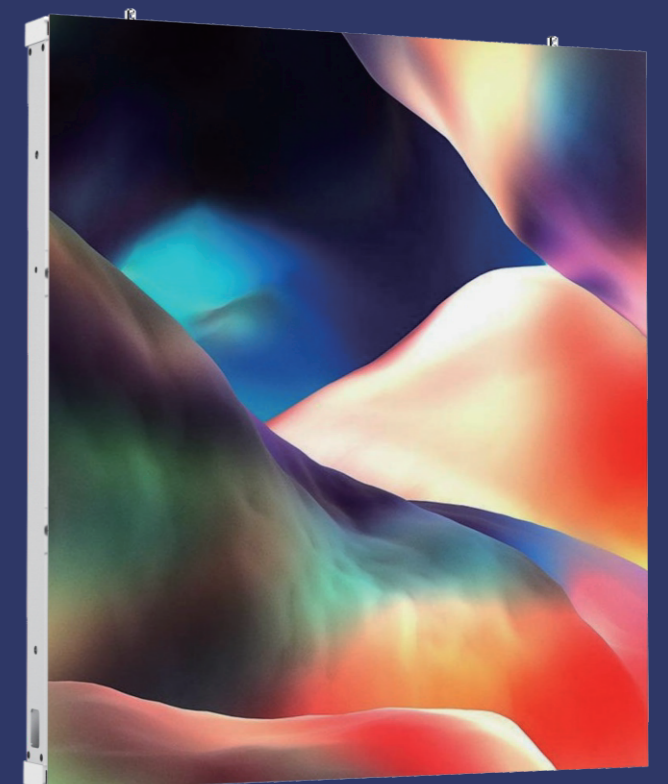




PP  
Series

EMC CLASS B



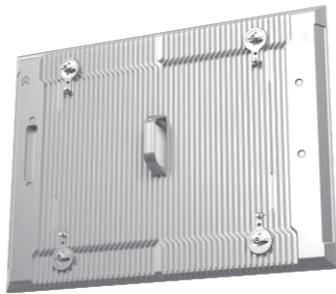
---

5 Years Warranty

---

Fast Front and Back maintenance

- PP Series modules designed with fast lock, it is easy to lock and unlock by a simple tool from both front oe back.



Heat Dissipation

- Aluminum module chassis and panel frame accelerates heat dissipation.
- Heat sink design for module chassis and power supply unit improves heat dissipation Considerably.
- White color frame can reflect the sunlight to reduce the heat generated in the panel.



Cable free back side

- All cables are hidden at the bottom of the cabinet, which makes the clean look and prevent disconnecting by accidents.

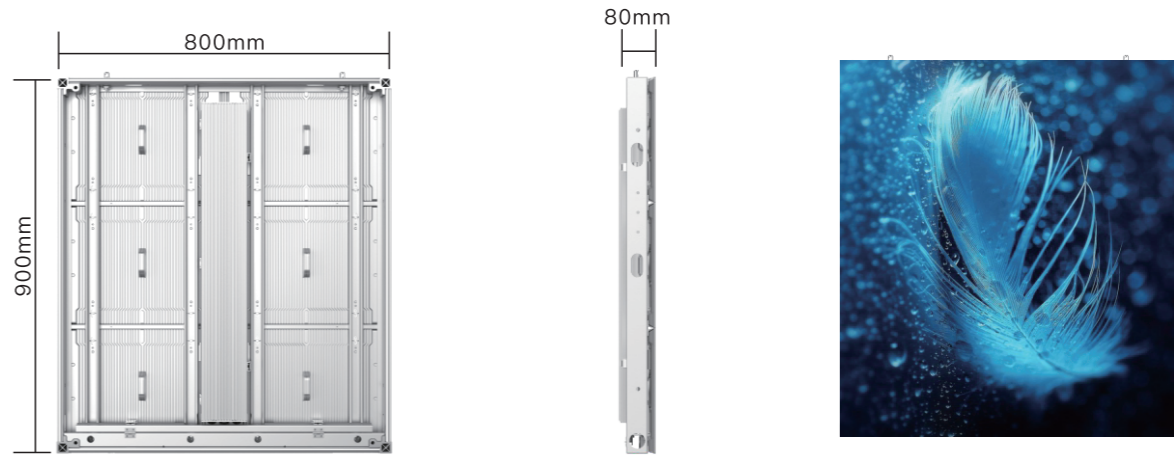


Protection grade IP66(Front & Rear) and Fanless cooling system

- The total cabinet is IP66 front and rear, tested by TUV.
- It will avoid any water entry from the outside.
- And the fanless cooling system will isolate dust and dirt
- and extend the lifespan of the electronic components inside.



Product Size



IP66 front &Rear



5VB Fireproof



EMC



Front & Rear Service



High Brightness

Specifications

Model name	LL-PP6.6	LL-PP8.3	LL-PP10
Pixel Pitch (mm)	6.67	8.33	10
Pixel Density (dot/m <sup>2</sup> )	22500	14400	10000
LED sealing Type	SMD2727	SMD3535	SMD3535
Module Size (mm * mm)	400*300	400*300	400*300
Module Resolution (PX* PX)	60*45	48*36	40*30
Module Weight (kg)	1.5 (kg)	1.5 (kg)	1.5 (kg)
Module Thicknees	18.5mm	19mm	20mm
Drive Mode	Constant Current	Constant Current	Constant Current
Horizontal Viewing Angle (Deg)	170	170	170
Vertical Viewing Angle (Deg)	110	110	110
Brightness (cd/m <sup>2</sup> )	6500-9500	6500-10000	6500-10000
Grey Scale (bit)	14bit	14bit	14bit
Refresh Rate (Hz)	3840	3840	3840
Maximum Cabinet Power Consumption (W)	630W/m <sup>2</sup>	550W/m <sup>2</sup>	550W/m <sup>2</sup>
Average Cabinet Power Consumption (W)	250/m <sup>2</sup>	200/m <sup>2</sup>	200/m <sup>2</sup>
Cabinet Size (mm * mm)	800*1200 1200*900 1200*1200 1600*900 800*900	800*1200 1200*900 1200*1200 1600*900 800*900	800*1200 1200*900 1200*1200 1600*900 800*900
Cabinet Weight (Kg)	25KG/M2(800*1200)	25KG/M2(800*1200)	25KG/M2(800*1200)
Cabinet Thickness(mm)	80	80	80
Input Voltage (V)	AC90-260V	AC90-260V	AC90-260V
Working Temperature (°C)	-20°C-60°C	-20°C-60°C	-20°C-60°C
Operating humidity (RH)	10%-90%	10%-90%	10%-90%
Waterproof Level Front &Rear	IP68/IP66	IP68/IP66	IP68/IP66
Working Environment	outdoor	outdoor	outdoor
Installtion Method	Full front&rear service	Full front&rear service	Full front&rear service
Certificate	CE (LVD、EMC) , ETL,CB	CE (LVD、EMC) , ETL,CB	CE (LVD、EMC) , ETL,CB